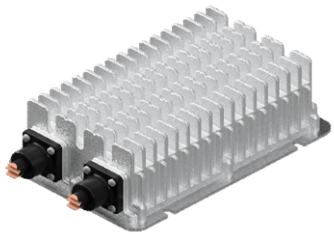

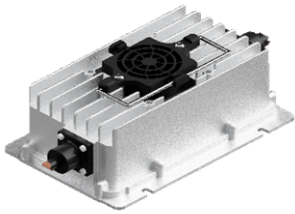


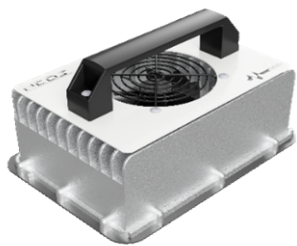


NOS Series Technical drawing

Model	Drawing	Quote	Kg	Watt	Absorption Max	Section DC	Plug
		L x P x H					
Mod. 0		187 x 123 x 62h	1,8	300W	120 Vac - 3,3A 220 Vac - 1,5A	4 mmq	V. N/NR - Schuko V. ON/ONR - IEC C14
Mod. 1		187 x 105 x 72h	2,3	750W	220 Vac - 4,0A	6 mmq	V. N - Schuko V. ON - IEC C14
Mod. 1C		187 x 122 x 76h	2,3	600W	220 Vac - 3,0A	6mmq	V. N - Schuko V. ON - IEC C14
Mod. 2		210 x 128 x 77h (280 support)	3,0	1350W	220 Vac - 7,3A	6 mmq	V. N - Schuko V. ON - IEC C14
Mod. 3C		220 x 125 x 77h	2,8	900W	120 Vac - 9,2A 220 Vac - 4,5A	10 mmq	V. N/NR - V. ON/ONR - IEC C14 integrata alla scocca

Mod. 4C



285 X 167 X 152h 4,8 2000W 220 Vac - 10,5A 16 mmq

V. N
V. ON
Schuko

Mod. 5



315 x 200 x 160h 7 3300W 220 Vac - 15,0A 16 mmq

V. N
V. ON
Schuko

Mod. 5C



340 x 192 x 102h 7 1200W
120 Vac - 12,0A
220 Vac - 6,1A 6 mmq

V. N
V. ON
Schuko

Mod. 7



419 x 270 x 101h 12,3 5000W 400 Vac - 9A 25 mmq

Cavo
privo di
spina

Mod. 8



351 x 202 x 105h 9,5 3000W 220 Vac - 16A 25 mmq

V. N
Schuko